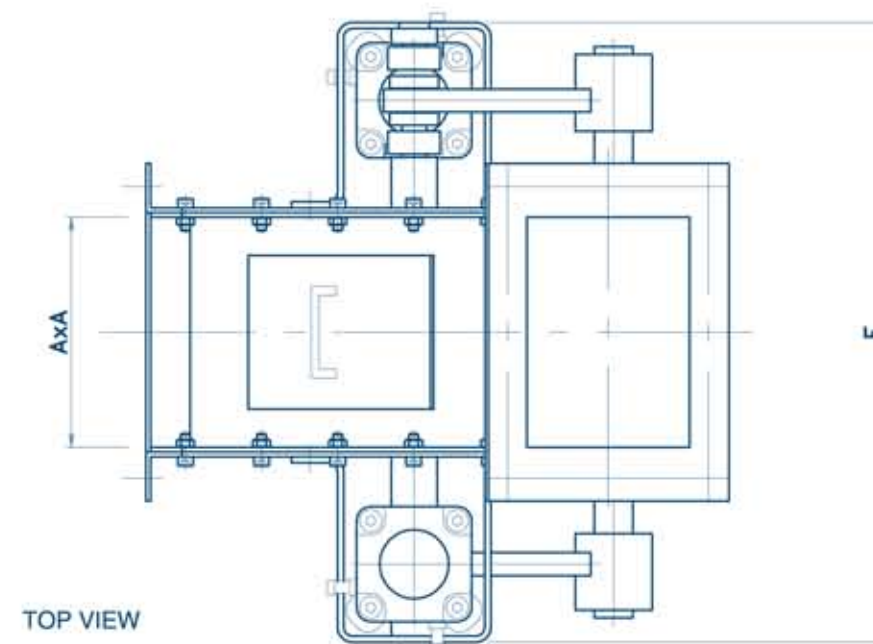
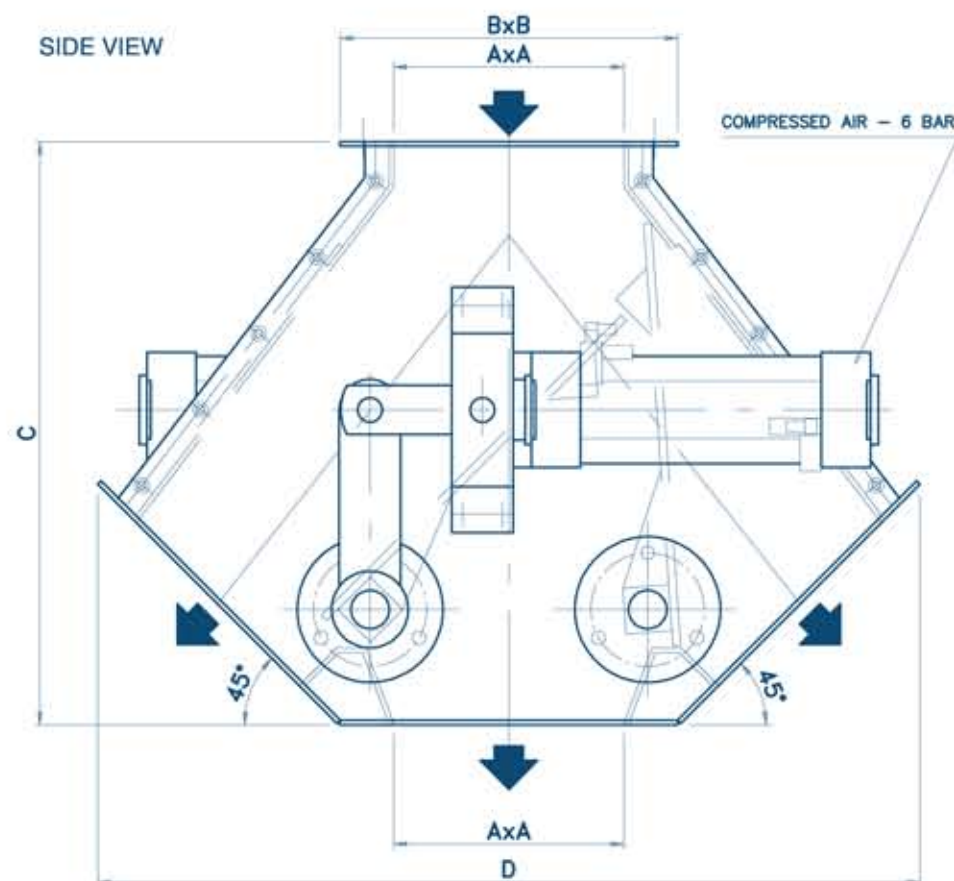


DTG3 3 WAYS GRAVIMETRIC

COMAV's Gravimetric Diverter Valve are designed to divert granule, powder and pellet from one to three ways.

Thanks to a two different special execution is also used for abrasive product and in diary making of DTG3 an universal valve for all kind of application with many accessories that match the customer's needs.



APPLICATIONS

- GRAVIMETRIC DISCHARGE
- POWDER
- GRANULE
- PELLETS
- DIVERTERS

DESIGN

- SIZE: DN150, DN200, DN 250
- BODY: CARBON STEEL, ALUMINIUM, STAINLESS STEEL AISI304/316L
- FLAP: PAINTED CARBON STEEL, STAINLESS STEEL AISI 304/316
- SEAL: FELT
- OPERATION: CYLINDER OR MANUAL

FEATURES

- PRESSURE: ATM
- TEMPERATURE: MAX 100 °C
- FLY SWITCH
- RUGGED DESIGN
- LONG LIFE

OPTIONALS

- SPECIAL EXECUTION FOR ABRASIVE PRODUCT
- INNER POLISHED TREATMENT
- FOOD GRADE APPROVED MATERIAL
- VARIOUS CHEMICAL TREATMENT ON BODY/FLAP
- HIGH TEMPERATURE VERSION
- INSPECTION DOOR WITH SAFETY KEY
- INNER CONE FOR FLOWRATE REDUCTION
- SIZE ON REQUEST
- KIT CONNECTING PIPE

BROCHURE



COMPLIANCE



II 2/3DC T135*

| | A | B | C | D | E | WEIGHT |
|-----|-----|-----|-----|-----|-----|--------|
| 150 | 150 | 220 | 450 | 655 | 455 | Kg - |
| 200 | 200 | 270 | 450 | 655 | 455 | Kg - |
| 250 | 250 | 320 | 500 | 775 | 505 | Kg - |