

## OYSTER VP INFINITY



The Oyster VP Infinity valve is a fully sanitary butterfly valve for powders and granules, designed for applications with full vacuum, ideal for use in Pharmaceutical, Food and Chemical Industries. Unlike other sanitary valves it is fully vacuum compatible in both open or closed position.

It fully conforms to cGMP design standards – the Clamshell™ clamp design ensures the valve is exceptionally quick and simple to strip down and reassemble, and no special tools are required, making it particularly suitable for clean room installations.

Its unique design gives excellent wear resistance between the leaf and the seal, which greatly extends the life of the seal and reduces the possibility of product contamination which could be caused by seal wear.

The valve is manufactured to full pharmaceutical specification. All product contact parts are machined from AISI316L with mirror polish finish.

### KEY FEATURES

- Resists full vacuum in both closed and open position
- Easy tool-free strip down for maintenance and cleaning
- Reduced wear resistance between seal and leaf
- Low opening and closing torque despite excellent sealing characteristics
- Valve body machined from solid to minimise the risk of ovalization or porosity caused by welding, and ensure optimal performance
- High quality mirror polish finish

### FIELD OF APPLICATION

Powder shut off - Vacuum



# OYSTER VP INFINITY

The Oyster VP Infinity valve is available in a variety of connection options:

- Tri-Clamp (according to ASME/BPE, BS4825-3, DIN 32676, others on request)
- Butt weld ends
- Oyster bayonet docking system
- BFM flanges

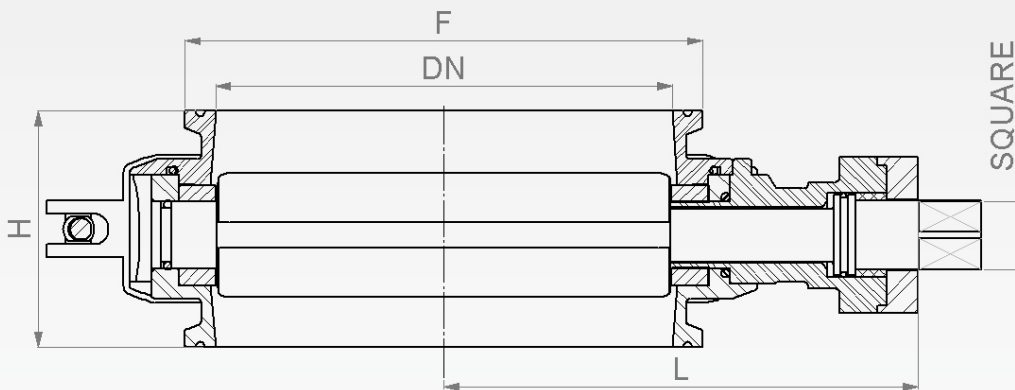
## DIMENSIONS

Dimensions in mm

Nominal size	DN50	DN80	DN100	DN150	DN200	DN250	DN300
F*	2"	3"	4"	6"	8"	10"	12"
L	91.5	104.5	140	165	190	215	240
H	75	75	76	76	76	76	76
Drive square	9x9	9x9	17x17	17x17	17x17	17x17	17x17
Weight Kg	2.5	3.3	5.7	8.3	11.3	14.5	17.8

\*TC ASME/BS4825 Other types available on request

The valve design and finish make it particularly well adapted for the requirements of the pharmaceutical industry.



## OPERATING CONDITIONS

### Working Pressure\*

Inside/outside, valve closed	0.5 bar (7.3 psi)
Upstream/Downstream, valve closed	0.5 bar (7.3 psi)

### Vacuum

Inside/outside, valve closed	-1.0 bar
Inside/Outside, valve open	-1.0 bar
Upstream/Downstream, valve closed	-1.0 bar

### Temperature

Hand operated	30°/+90°C (-22°/+194° F)
Actuated	20°/+80°C (-10°/176° F)

\*Pressure test certificate at higher pressures may be supplied on request depending on seal materials and operating conditions.



The operating torque of the Oyster VP Infinity valve is lower than competing valves. This enables easier handling, and in the case of actuated valves, a smaller lighter actuator and lower air consumption. The other main advantage of this valve is the exceptionally low seal wear, and reduced risk of contamination of the product by particles of seal material, a vital consideration in the pharmaceutical industry.

# OYSTER VP INFINITY

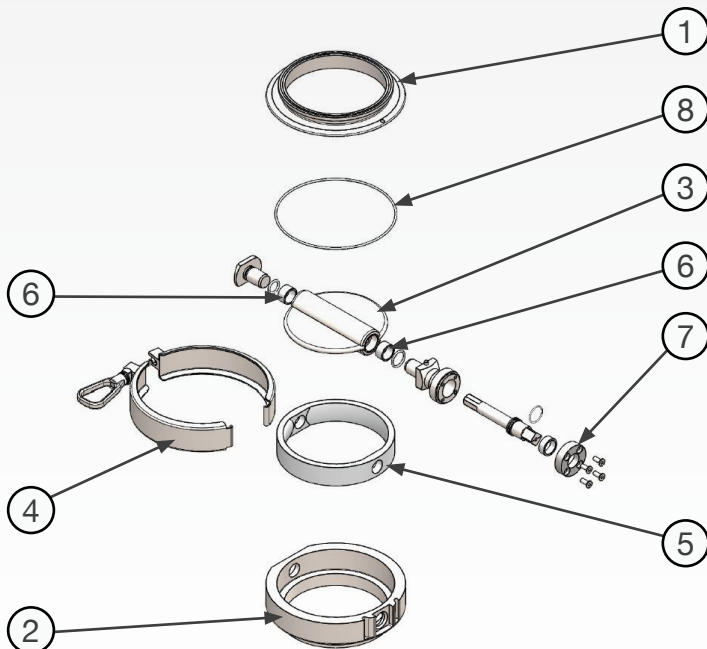
## OPTIONS FOR OPERATION:

Manual operation		Automatic operation	
<b>Standard:</b>	Handlever with locking pin	<b>Actuator types:</b>	Double acting Rack & pinion pneumatic
<b>Orientation:</b>	0-90°		Spring return Rack & pinion pneumatic
	45-45°		Electric actuator
<b>Optional Accessories:</b>	Full stainless steel		<b>Materials:</b>
	Customised orientation	<b>Options:</b>	Solenoid valve
	Lockable		Position sensors, Limit switches
	Position sensor		4-20 mA positioner for proportional control
	Push & turn lever		Full st/st enclosure
	Multi-position stops	<b>ATEX:</b>	Quick release Actuator support
	<b>Air supply:</b>	Certification: II 2GD cIIB T4/T135°C	
		min 5bar (75 psi)/max 10bar (150psi) Dry, non-lubricated	

The Oyster VP Infinity valve is available with a variety of different mounting types.



When used in a potentially explosive atmosphere, the Oyster VP Infinity valve is supplied and marked according to the Directive 2014/34 / EU (ATEX).



## TABLE OF PARTS AND MATERIALS:

Ref	Part Name	Material options
1	Upper H.body	AISI 316L (EN 1.4301), C22
2	Lower H.body	AISI 316L (EN 1.4301), C22
3	Leaf	AISI 316L (EN 1.4301), C22
4	Clamshell clamp	AISI 304 (EN 1.4301)
5	Seal*	Silicone, EPDM, Kaflon FFKM
6	Bushings	PEEK AISI 304 (EN 1.4301)
7	Actuator Mount	AISI 304 (EN 1.4301)
8	O-Ring*	VMQ

\* All elastomers are FDA certified.

All materials used are compliant with the following standards: FDA, and cGMP. Product contact surfaces are mirror polished to the highest pharmaceutical standards. Further information can be supplied on request.

# OYSTER VP INFINITY

Besides the Oyster™ VP Infinity, ValvEngineering offers a complete range of hygienic valves and dosing valves for powders, and sampling systems for both solids and liquids. All of our products include outstanding design features and superior manufacturing quality which make them ideally suited to the demanding requirements of the pharmaceutical, Food & Beverage and Chemical Industries.

On this page is a brief introduction to our key products. Please do not hesitate to contact us for further information about the products or to discuss specific applications



**Oyster Compact Series**

The Oyster™ Compact series features the patent Clamshell clamp system, widely acknowledged as the most compact, hygienic and user-friendly valve on the market.



**Oyster Composite Valve**

The ideal choice for the discharge and volumetric dosing of powders, particularly in pack-off system. The ingenious design of the valve ensures optimal filling rates and dosing accuracy. It can be easily customised to suit individual customer requirements.



**Oyster Feeder Valve**

Metal/Metal construction makes the valve suitable for continuous operation by motor for large discharge volumes. Shaped valve body ensures control of product flow.



**Oyster Samplmaster**

The Oyster™ Samplmaster includes both intrusive and non-intrusive sampling valves for powders and granules. They are offered in both manual and automatic versions, with a vast range of mounting options and configurations.



**Oyster Reactor Sampling System**

The Oyster Reactor Sampling System is a safe and reliable sampling device able to meet the most demanding requirements of the pharmaceutical and chemical industry.

**ValvEngineering Srl**

Via di Coselli 23/25 – 55012 Capannori - LUCCA - Italy

• TEL +39 0583 378587 • FAX+39 0583 1553006

• P.IVA IT02090150463

WEB: [www.valvengineering.com](http://www.valvengineering.com) MAIL: [info@valvengineering.com](mailto:info@valvengineering.com)

**DISTRIBUTED BY:**