



MIX S.r.l.

MIXING SYSTEMS AND
COMPONENTS FOR PLANTS

www.mixitaly.com

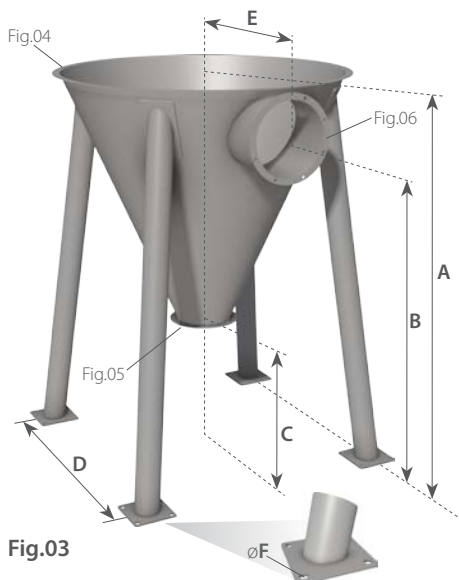
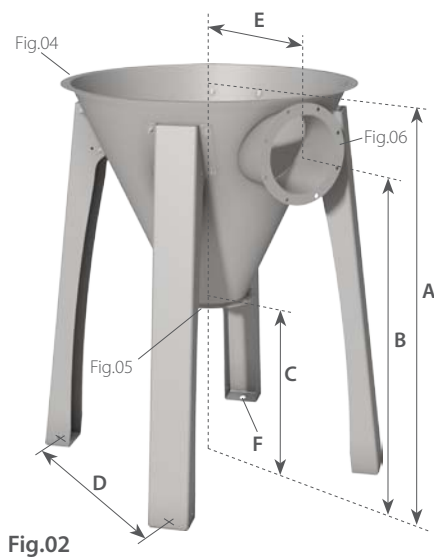
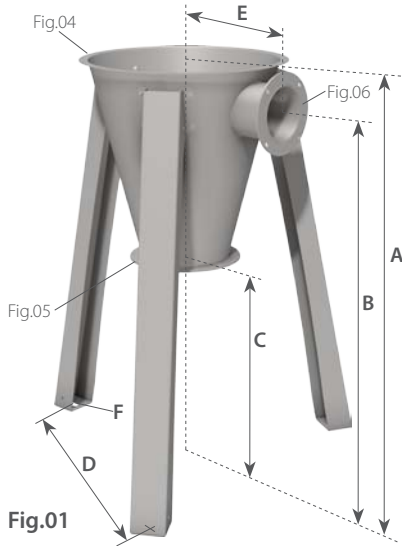
Filter accessories



N-SFT....

T-SFT....

DIMENSIONS



DESCRIPTION

The pre-separating hopper is usually placed under the filter to convey the air and favor a first decantation of the powder.

COMBINATION TABLE

N-SFT E F 05 A 1 H 1 N

Classification MSD

Diameter of the mouth

- A: 80 (DN350)
- C: 150 (DN540)
- D: 200 (DN790)
- E: 250 (DN950-1100)
- F: 320 (DN1300-1550)

Hopper diameter

- 05: 350
- 10: 540
- 20: 790
- 22: 950
- 24: 1100
- 26: 1300
- 28: 1550

Type

- F: Flanged
- K: Complete with wheeled bucket

Execution

- N-SFTE: Standard
- T-SFTE: Suitable for potentially explosive environment

Execution

- N: Atmospheric
- V: Vacuum
- P: Standard and capable of withstanding the overpressure shock caused by an explosion (T-execution only)
- R: Vacuum and capable of withstanding the overpressure shock caused by an explosion (T-execution only)

Construction material

- 1: Carbon steel
- 2: Parts in contact with product in AISI 304 Supporting legs in Carbon steel

Fastening of mouth

- H: Flanged (Welded)

Quantity of mouths

- 1: 1 mouth
- 3: 3 mouths (special on request)
- A: 1 mouth with a reduction disc
- C: 1 mouth with a cyclonic modular device

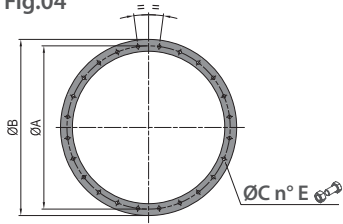
CODE			Fig.	DN	A	B	C	D	E	F	Kg	dm ³
See combination table												
N-	T-	SFTEF	01	350	955	890	625	625	230	30X14	19,7	17
N-	T-	SFTEF	01	540	1210	1090	625	875	350	40x18	33,7	74
N-	T-	SFTEF	01	790	1350	1205	625	873	460	40X22	50,4	165


CODE			Fig.	DN	A	B	C	D	E	F	Kg	dm ³
See combination table												
N-	T-	SFTEF	02	950	1400	1230	625	820	555	40x22	98	245
N-	T-	SFTEF	02	1100	1535	1335	625	890	600	40X22	118	370

CODE			Fig.	DN	A	B	C	D	E	F	Kg	dm ³
See combination table												
N-	T-	SFTEF	03	1300	1815	1620	625	1155	770	21 \varnothing	152	645
N-	T-	SFTEF	03	1550	2000	1805	625	1334	885	21 \varnothing	182	960

FASTENING FLANGE TO THE DUST FILTER

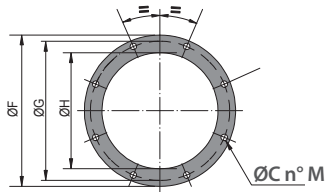
Fig.04



DN	ØA	ØB	ØC	n°E	
350	382	402	9	12	M8
540	570	590	9	16	M8
790	820	840	9	24	M8
950	996	1024	11	28	M10
1100	1154	1182	11	32	M10
1300	1338	1365	11	36	M10
1550	1588	1615	11	44	M10

OUTLET FLANGE **

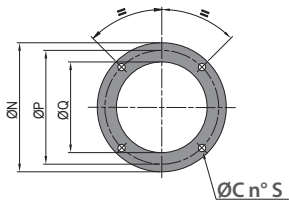
Fig.05



DN	ØF	ØG	ØH	ØL	n°M
350	225	200	150	14	4
540	325	300	250	14	8
790	325	300	250	14	8
950	325	300	250	14	8
1100	325	300	250	14	8
1300	325	300	250	14	8
1550	325	300	250	14	8

INLET FLANGE

Fig.06



DN	ØN	ØP	ØQ	ØR	n°Sn°M
350	160	130	70	14	4
540	225	200	146	14	4
790	275	250	200	14	4
950	325	300	250	14	8
1100	325	300	250	14	8
1300	380	350	318	14	8
1550	380	350	318	14	8

** NOTE: Variable outlet flange orientation according to the diameter of the hopper. For more details ask for the specific drawing

CONFIGURATION

See specific data sheet



N-SFTEF



N-SFTEK
DN 350



N-SFTEK
DN 540 ÷ DN 1550

At the discharge of the **DN 350** hoppers only butterfly valves with long shaft can be applied

NOTE: All dimensions in mm, unless stated otherwise. The Company MIX reserves the right to alter product specifications without prior notice. All the quoted sizes are approximate. The given figures are mean values with tolerances entailed by the customary production-related variations. In any particular case, and to have the correct values, our written confirmation is necessary.

REDUCING SPIGOTS

T-KFFE....

DESCRIPTION

MIX reduction spigots can be applied to the inlet of the hoppers and to the lateral outlet of the filters. Thanks to the wide range available, they allow to customize filter connections to meet specific needs.

COMBINATION TABLE

T-KFF **E** **A** **021** **H** **1** **A**

Classification MSD

Ø for the outlet mouth

050 = 50	150 = 150 Jacob
060 = 60,3	168 = 168,3
076 = 76,1	200 = 200 Jacob
080 = 80 Jacob	219 = 219,1
088 = 88,9	250 = 250 Jacob
100 = 100 Jacob	273 = 273
101 = 101,6	300 = 300 Jacob
114 = 114,3	323 = 323,9
139 = 139,7	

Original DN

A: 80 (DN350)
C: 150 (DN540)*
D: 200 (DN790)
E: 250 (DN950-1100)
F: 320 (DN1300-1550)

* usual DN for bag-emptying hopper T-SERE

Review

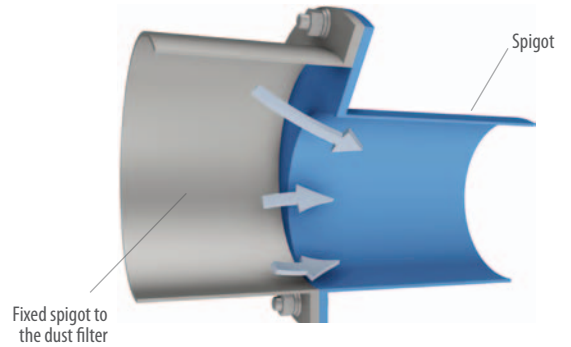
Material of Construction

- 1:** Mild steel
- 2:** Aisi 304

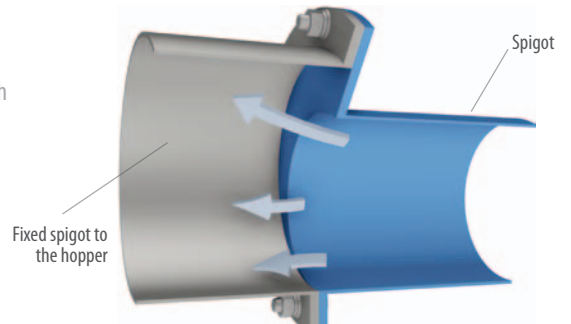
Spigot type

- H:** with a solder flange
- L:** with a flange and a smooth spigot for a flexible hose
- J:** with a flange and a Jacob-type spigot

Clean air flow out from the dust filter



Incoming dusty air flow, to the hopper



Type

T-KFFE: This type is suitable for a potentially explosive atmosphere

<p>Dust filter</p> <p>Hopper</p>	Flange to be welded (H)	
	I: for a piping with reduced Ø 	II: for a piping with usual Ø from MIX
	Spigot with a flange and a Jacob-type spigot (J)	
	III: for a piping with reduced Ø 	IV: for a piping with usual Ø from MIX
	Spigot with a flange and a smooth spigot, for a flexible hose (L)	
	V: for a piping with reduced Ø 	VI: for a piping with usual Ø from MIX

REDUCING SPIGOTS

SPIGOTS COMBINATIONS

For flanges details, please check the hoppers datasheet

WITH A SOLDER FLANGE "H" / SMOOTH TYPE "L"						
CODE	Original DN	Ø for the outlet mouth	Length		Material of Construction	
			H	L	1 - Mild steel	2 - Aisi 304
T-KFFEA050..A	80	50	/	150	/	✓
T-KFFEA060..A	80	60,3	/	150	/	✓
T-KFFEA076..A	80	76,1	/	150	/	✓
T-KFFEC060..A	150	60,3	/	150	/	✓
T-KFFEC076..A	150	76,1	/	150	/	✓
T-KFFEC088..A	150	88,9	/	150	/	✓
T-KFFEC101..A	150	101,6	/	150	/	✓
T-KFFEC114..A	150	114,3	/	150	/	✓
T-KFFEC139..A	150	139,7	/	150	/	✓
T-KFFED076..A	200	76,1	/	150	/	✓
T-KFFED088..A	200	88,9	/	150	/	✓
T-KFFED101..A	200	101,6	/	150	/	✓
T-KFFED114..A	200	114,3	/	150	/	✓
T-KFFED139..A	200	139,7	/	150	/	✓
T-KFFEE101..A	250	101,6	/	150	✓	✓
T-KFFEE114..A	250	114,3	/	150	✓	✓
T-KFFEE139..A	250	139,7	/	150	✓	✓
T-KFFEE168..A	250	168,3	/	150	✓	✓
T-KFFEE219..A	250	219,1	/	150	✓	✓
T-KFFEF273..A	323	273	/	150	✓	✓
T-KFFEE323..A	323	323,9	/	150	✓	✓

JACOB TYPE "J"					
CODE	Original DN	DN of the Jacob spigot	Length	Material of Construction	
				1 - Mild steel	2 - Aisi 304
T-KFFEA080J.A	80	80	55	/	✓
T-KFFEC080J.A	150	80	55	/	✓
T-KFFEC100J.A	150	100	55	/	✓
T-KFFEC150J.A	150	150	55	/	✓
T-KFFED100J.A	200	100	55	/	✓
T-KFFED150J.A	200	150	55	/	✓
T-KFFED200J.A	200	200	55	/	✓
T-KFFEE150J.A	250	150	55	✓	✓
T-KFFEE200J.A	250	200	55	✓	✓
T-KFFEE250J.A	250	250	55	✓	✓
T-KFFEF250J.A	323	250	55	✓	✓
T-KFFEF300J.A	323	300	55	✓	✓

NOTE: All dimensions in mm, unless stated otherwise. The Company MIX reserves the right to alter product specifications without prior notice. All the quoted sizes are approximate. The given figures are mean values with tolerances entailed by the customary production-related variations. In any particular case, and to have the correct values, our written confirmation is necessary.

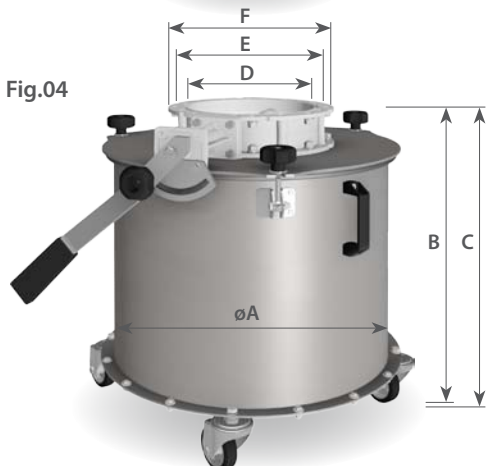
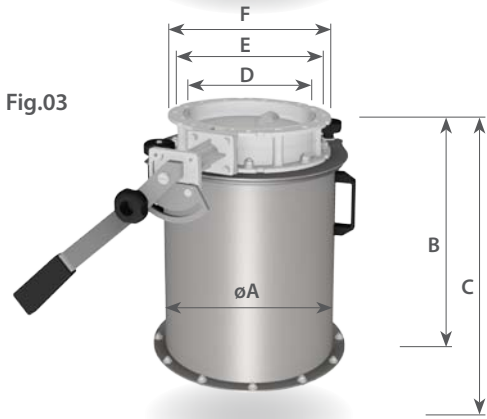
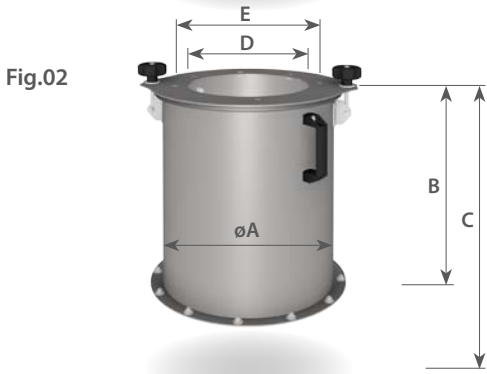
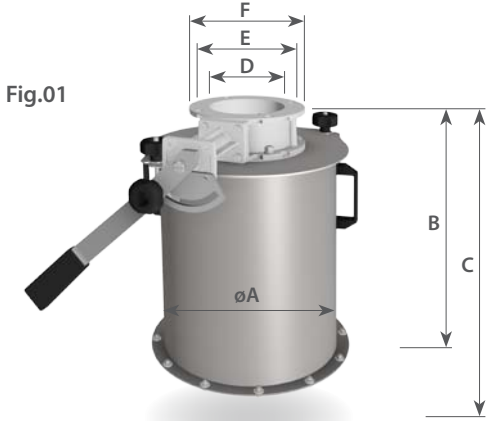


MOBILE DUST COLLECTION TANK

N-SFNE....

T-SFNE....

DIMENSIONS



DESCRIPTION

MIX Mobile dust collection tank, placed at the hopper outlet, allows the recovery of the powders accumulated by the de-dusting action of the filter.

COMBINATION TABLE

N-SFN **E** **05** **B** **1** **N**

Classification
MSD

Application

- N:** Atmospheric
- V:** Suitable for vacuum applications
- P:** Atmospheric capable to resist to the explosion pressure blast (only version T-)
- R:** Suitable for vacuum applications, capable to resist to the explosion pressure blast (only version T-)

Costruction material

- 1:** Carbon steel, RAL9006 painted
- 2:** Stainless steel AISI 304

Model

- B:** Completo with Valve SVA250
- C:** Completo with Valve SVA150
- D:** Without valve (designed for valve SVA250) (No version T-)

Diameter of bin
05: DN 350
10: DN 540

Type

- N-SFNE:** Mobile dust collection tank
- T-SFNE:** Removable wheeled bin, suitable for potentially explosive environments

CODE			Fig.	ØA	B	C	ØD	ØE	ØF		kg	Liters
See combination table												
N-	T-	SFNE05C..	01	350	505	625	150	200	228	M 10 n°4	16	38
N-	/	SFNE05D..	02	350	425	625	250	300	326	M 10 n°8	10	38
N-	T-	SFNE05B..	03	350	505	625	250	300	326	M 10 n°8	19	38
N-	T-	SFNE10B..	04	540	617	625	250	300	326	M 10 n°8	37	100

A: Ø of bin / **B:** overall height / **C:** height from the ground / **D:** Ø for product passage / **E:** center-to-center distance for mounting / **F:** Ø O.D. of the valve

Standard Combinations

DN 350	DN 540÷1550	DN 540÷1550
05	05	10
/	N-SFNE05B1N	N-SFNE10B1N
N-SFNE05C2N	N-SFNE05B2N	N-SFNE10B2N
/	N-SFNE05B1V	N-SFNE10B1V
N-SFNE05C2V	N-SFNE05B2V	N-SFNE10B2V
/	N-SFNE05D1N	/
/	N-SFNE05D2N	/
/	N-SFNE05D1V	/
/	N-SFNE05D2V	/

Suitable combinations for potentially explosive environments: $P_{red} 0,48 \text{ bar}$

DN 350	DN 540÷1550	DN 540÷1550
05	05	10
/	T-SFNE05B1N	T-SFNE10B1N
T-SFNE05C2N	T-SFNE05B2N	T-SFNE10B2N
/	T-SFNE05B1V	T-SFNE10B1V
T-SFNE05C2V	T-SFNE05B2V	T-SFNE10B2V
/	T-SFNE05B1P	T-SFNE10B1P
/	T-SFNE05B2P	T-SFNE10B2P
/	T-SFNE05B1R	T-SFNE10B1R
/	T-SFNE05B2R	T-SFNE10B2R

MIX Standard Versions

Model to be handled on Customer's request

NOTE: All dimensions in mm, unless stated otherwise. The Company MIX reserves the right to alter product specifications without prior notice. All the quoted sizes are approximate. The given figures are mean values with tolerances entailed by the customary production-related variations. In any particular case, and to have the correct values, our written confirmation is necessary.

CENTRIFUGAL DUST SEPARATOR

T-SFX..A..

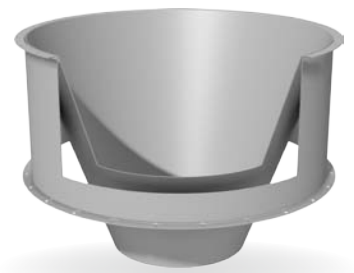
DESCRIPTION

The **centrifugal dust separator** mounted into a pre-separating hopper, gives the following benefits:

- it creates a cyclonic effect, when inlets are not fitted with deflector and enhances the effect of those fitted with deflector, avoiding contact of the moist particles to the filtering medias
- it improves the filtering elements efficiency and extends filtration media life;
- the collection of all waste product into the mobile dust collection tank.

COMBINATION TABLE

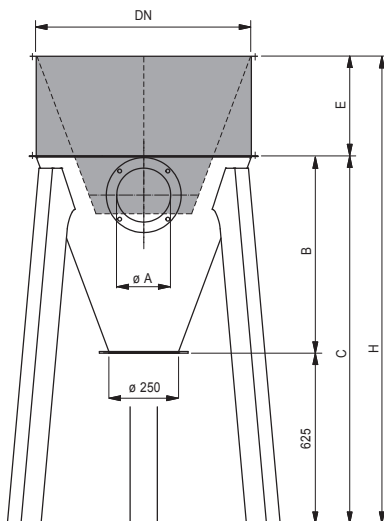
T-SFX	E	10	A	1	N
Version T-SFX: Suitable for potentially explosive environment	Classification MSD	Size 10: DN.540 20: DN.790 22: DN.950 24: DN.1100 ----- 26: DN.1300* 28: DN.1550*	Type of execution A: Flanged Standard	Material of construction 1: Carbon steel, RAL9006 painted 2: Stainless steel AISI 304 3: Carbon steel, EPOXY food paint inside; RAL9006 outside	N: Standard V: Suitable for vacuum applications



*For these sizes there are particular solutions

DIMENSIONS

Version		DN. 350	DN. 540	DN. 790	DN. 950	DN. 1100	DN. 1300	DN. 1550
N-	T-	/	SFX10A..	SFX20A..	SFX22A..	SFX24A..	Specials Versions	



DN	ØA	B	C	E	H	kg
540	90	582	1207	400	1607	20
790	90	724	1349	366	1715	35
790	150	724	1349	366	1715	35
950	200	776	1401	386	1887	45
1100	250	911	1536	436	1972	60

NOTE: All dimensions in mm, unless stated otherwise. The Company MIX reserves the right to alter product specifications without prior notice. All the quoted sizes are approximate. The given figures are mean values with tolerances entailed by the customary production-related variations. In any particular case, and to have the correct values, our written confirmation is necessary.

FLAT-BOTTOM SWEEP DISCHARGE

MEB..F1...

DESCRIPTION

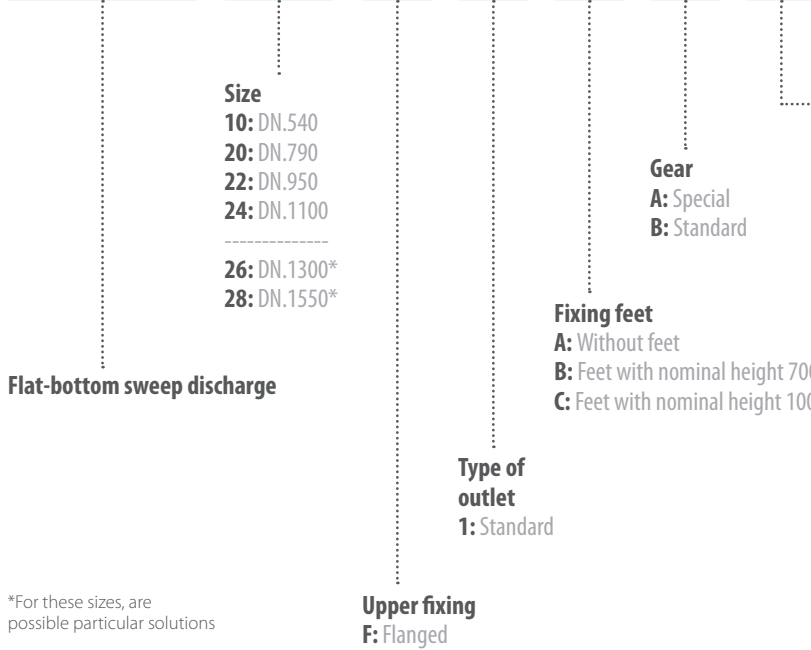
The **Flat-bottom sweep discharge** is the alternative to hoppers in case of reduced vertical spaces and poorly flowing products.

Its characteristics and advantages are:

- it is functional and simple to use;
- modular design and high quality;
- easy maintenance of the rotor and dismantling of the scrapers thanks to the inspection door;
- reduction of product residues;
- the machine is in conformity with the Directive 2006/42/EC;
- discharge spigot available as requested by the customer and compatible with a possible rotary valve; feet or brackets vary according to the different types of fixings and custom overall dimensions available; provision for minimum level indicator.

COMBINATION TABLE

MEB	10	F	1	A	A	1
-----	----	---	---	---	---	---



*For these sizes, are possible particular solutions



FLAT-BOTTOM SWEEP DISCHARGE

DIMENSIONS

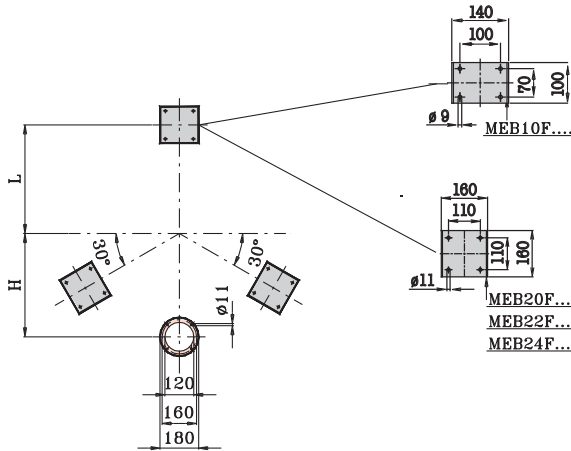
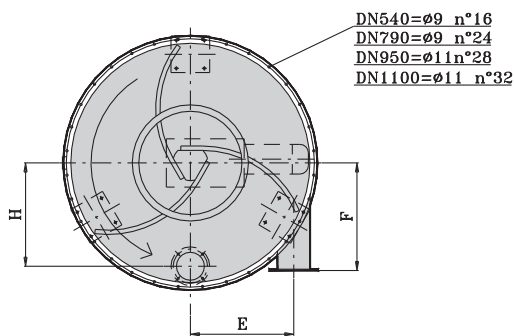
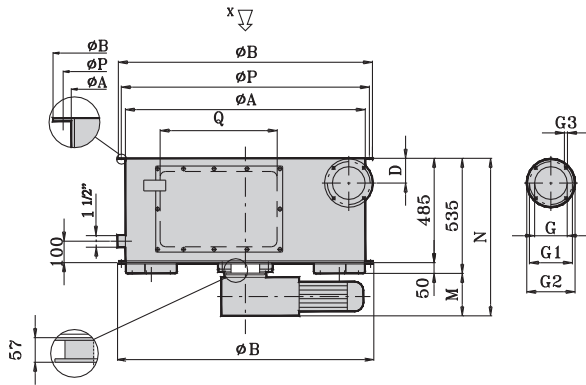


Fig.01

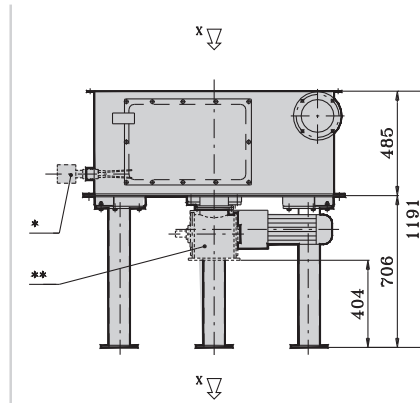


Fig.02

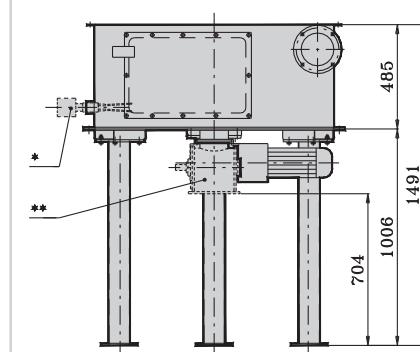


Fig.03

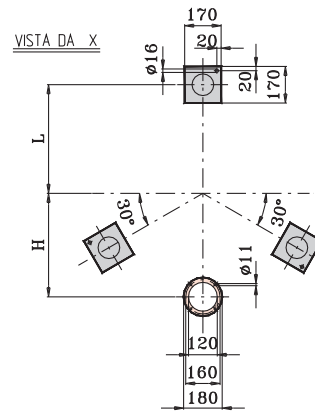


Fig.04

* Level indicator as optional to be ordered separately. Standard supplying with plug. ** Rotary valve to be ordered separately; the dimensions refer to the standard type BTC18

Type	DN	Fig.	A	B	D	E	F	G	G1	G2	G3	H	L	M	N	P	Q	kW	kg
MEB10F1AB.	540	1	539	590	100	220	300	101	140	165	11	202	235	150	685	570	350	0,25	73
MEB10F1BB.	540	2+4	539	590	100	220	300	101	140	165	11	202	235	150	685	570	350	0,25	80
MEB10F1CB.	540	3+4	539	590	100	220	300	101	140	165	11	202	235	150	685	570	350	0,25	82
MEB20F1AB.	790	1	792	590	100	318	420	152	200	225	14	320	330	180	715	820	450	0,37	125
MEB20F1BB.	790	2+4	792	840	115	318	420	152	200	225	14	320	330	180	715	820	450	0,37	135
MEB20F1CB.	790	3+4	792	840	115	318	420	152	200	225	14	320	330	180	715	820	450	0,37	137
MEB22F1AB.	950	1	956	1024	140	400	450	152	200	225	14	400	420	200	735	996	550	0,55	205
MEB22F1BB.	950	2+4	956	1024	140	400	450	152	200	225	14	400	420	200	735	996	550	0,55	215
MEB22F1CB.	950	3+4	956	1024	140	400	450	152	200	225	14	400	420	200	735	996	550	0,55	217
MEB24F1AB.	1100	1	1116	1182	140	480	500	152	200	225	14	480	500	200	735	1154	560	0,55	245
MEB24F1BB.	1100	2+4	1116	1182	140	480	500	152	200	225	14	480	500	200	735	1154	560	0,55	255
MEB24F1CB.	1100	3+4	1116	1182	140	480	500	152	200	225	14	480	500	200	735	1154	560	0,55	257

NOTE: All dimensions in mm, unless stated otherwise. The Company MIX reserves the right to alter product specifications without prior notice. All the quoted sizes are approximate. The given figures are mean values with tolerances entailed by the customary production-related variations. In any particular case, and to have the correct values, our written confirmation is necessary.



BAG DUMP STATION

T-SER E..F..A

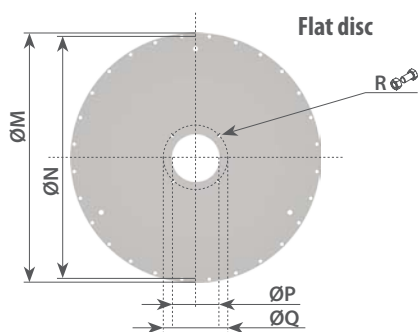
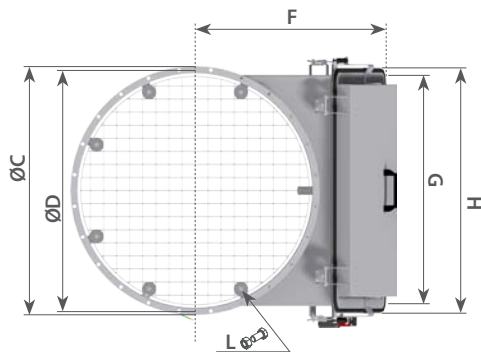
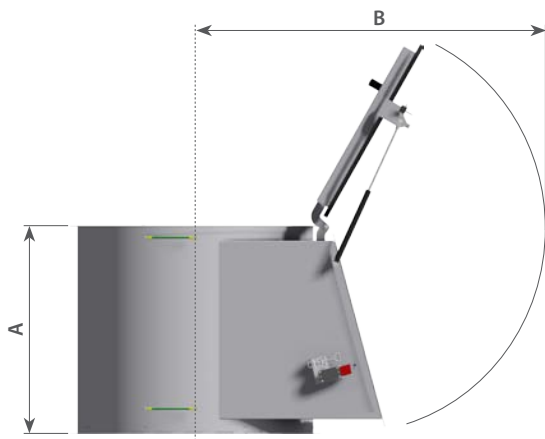
DESCRIPTION

The bag dump station is:

- Versatile and easy to use on hoppers, on extractors, on processing machines and on containers in general, ideal for manual discharge of powders &/or granular materials supplied in small bags;
- Low capital & maintenance costs;
- Compliant with the current safety systems (safety grid for bags falling - cylinder for the locking spring to lock the hood's hatch when open and filter cleaning suspended while charging of materials);
- Modular and compatible to filters and aspiration hoods (available as optional) for centralised dust recycling filtration systems.

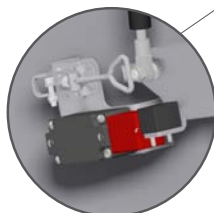


DIMENSIONS



DN	A	B	ØC	ØD	F	G	H	L	ØM	ØN	ØP	ØQ	R	kg*
540	700	1005	590	570	555	780	830	Ø 9 n°16	590	570	168	200	M10 n°4	50
790	700	1130	840	820	680	780	830	Ø 9 n°24	840	820	168	200	M10 n°4	62
950	700	1220	1024	996	770	780	830	Ø 11 n°28	1024	996	168	200	M10 n°4	73

* Weight of the "Z" type; types with lid can vary their weights +5÷20 kg depending of their ø and on the lid type



OPTIONS:

Mechanical limit-switch

The T-SERE bag-emptying hopper is supplied without mechanical limit-switch in standard production

The limit-switch can be supplied as an option in the following types:

- 12A01440 limit-switch kit, standard production
- 12A01442 limit-switch kit, ATEX II 3D zone 22 IP66 T°80C



BAG DUMP STATION

COMBINATION TABLE

T - **SER** **E** **10** **F** **P** **1** **A**

Bag dump station

Classification MSD

Size
10: DN 540
20: DN 790
22: DN 950

Type of execution
F: Flanged
Standard

Review

Material of construction

- 1:** Carbon steel, with usual coating from MIX SRL
 - 2:** Parts in contact w/product: in s.s. AISI 304
 - 4:** Parts in contact, and outer parts in s.s AISI 304*
 - 9:** Parts in contact with the product Certified for Food Use Règlement (EC) n.1935/2004
- * special production

Execution

T- : Suitable for potentially explosive environment

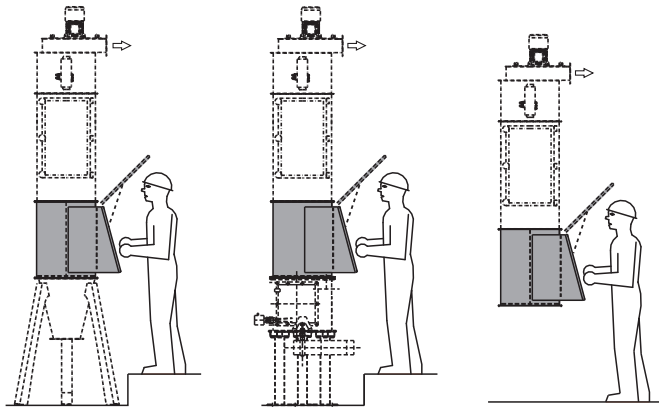
Layout of lid

- P:** Flat; prepared for a standard spigot (standard production)
- Q:** Reduction disc, for a DN350 dust filter (Size 10 and 20)
- R:** Reduction disc, for a DN540 dust filter (Size 20 and 22)
- S:** Reduction disc, for a DN790 dust filter (Size 22)
- Z:** Without lid

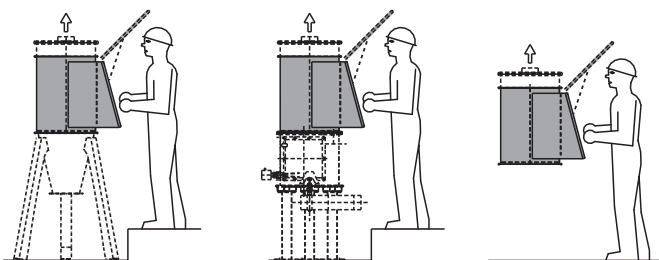
T-SERE10FP2A	T-SERE20FP1A	T-SERE20FP2A	T-SERE22FP1A
T-SERE10FZ2A	T-SERE20FZ1A	T-SERE20FZ2A	T-SERE22FZ1A

All codes in the table are standard production; all the remaining combinations must be considered non-standard production.

APPLICATIONS - TYPES



Bag dump station with filter dust extraction filter



Bag dump station system with hood for centralised aspiration



NOTE: All dimensions in mm, unless stated otherwise. The Company MIX reserves the right to alter product specifications without prior notice. All the quoted sizes are approximate. The given figures are mean values with tolerances entailed by the customary production-related variations. In any particular case, and to have the correct values, our written confirmation is necessary.



N-MB.

A-MB.

DIMENSIONS

DESCRIPTION

The radial fan assembled on MIX dust collector filters, creates a vacuum to convey the dust from the point where it is generated and conveyed to the filter, allowing effective dust removal.

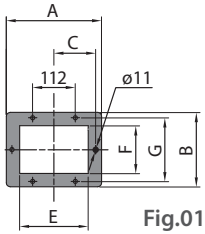


Fig.01

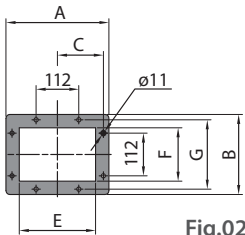


Fig.02

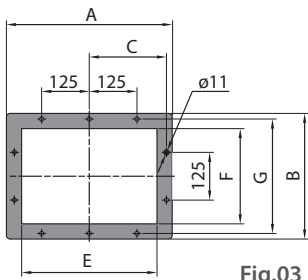


Fig.03

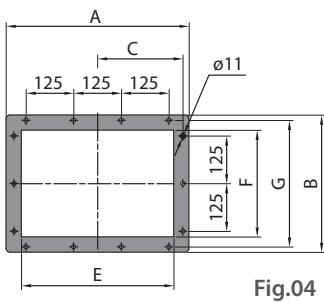


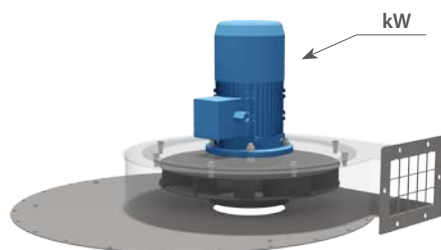
Fig.04



kW	Fig.	A	B	C	E	F	G	H*	kg
0,75	1	230	182	100	156	112	153	375	32
1,1								34	
1,5	1	250	195	109,5	180	125	167	400	40
2,2								425	43
3	2	270	210	120,5	200	140	182	475	62
4								495	70
5,5	3	435	330	202,5	355	250	300	650	95
7,5								690	107
11	4	480	360	224	400	280	332	805	160

* The value may change of +/- 50 ÷ 100 mm depending on the brand of the electric motor.

MOTOR POWER



kW	0,75	1,1	1,5	2,2	3	4	5,5	7,5	11
DN350	✓	✓	✓						
DN540	✓	✓	✓	✓					
DN790		✓	✓	✓	✓	✓	✓	✓	
DN950			✓	✓	✓	✓	✓	✓	✓
DN1100			✓	✓	✓	✓	✓	✓	✓
DN1300						✓	✓	✓	✓
DN1500						✓	✓	✓	✓

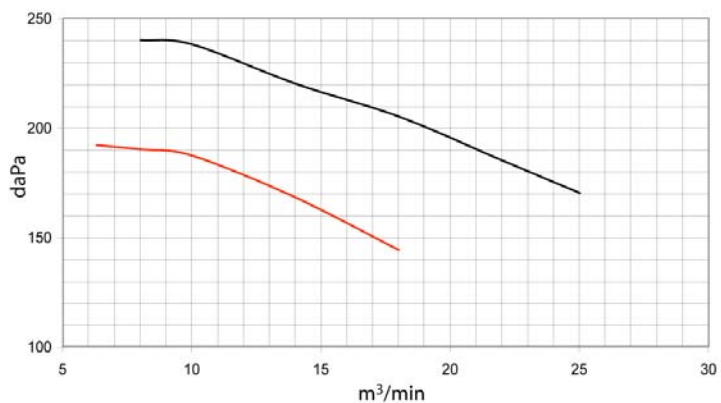
NOTE: All dimensions in mm, unless stated otherwise. The Company MIX reserves the right to alter product specifications without prior notice. All the quoted sizes are approximate. The given figures are mean values with tolerances entailed by the customary production-related variations. In any particular case, and to have the correct values, our written confirmation is necessary.



FANS' CURVES

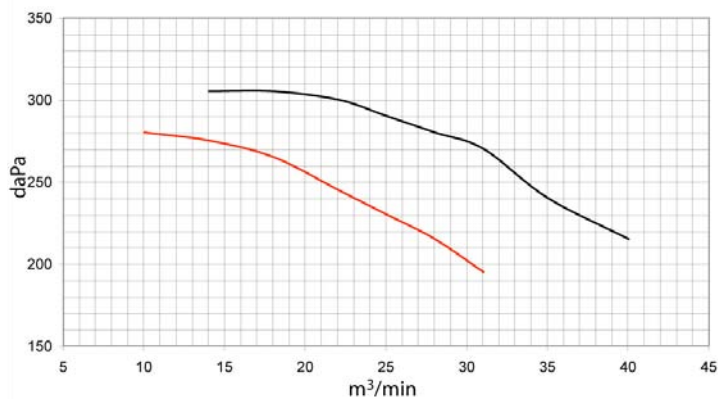
MBS 360 1,1 kW

MBS 330 0,75 kW



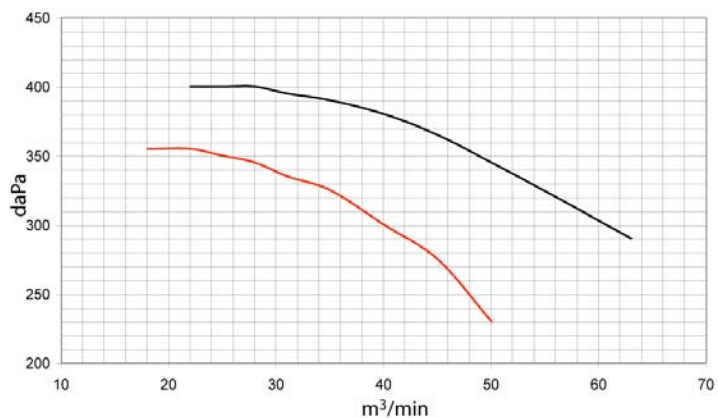
MBS 415 2,2 kW

MBS 385 1,5 kW



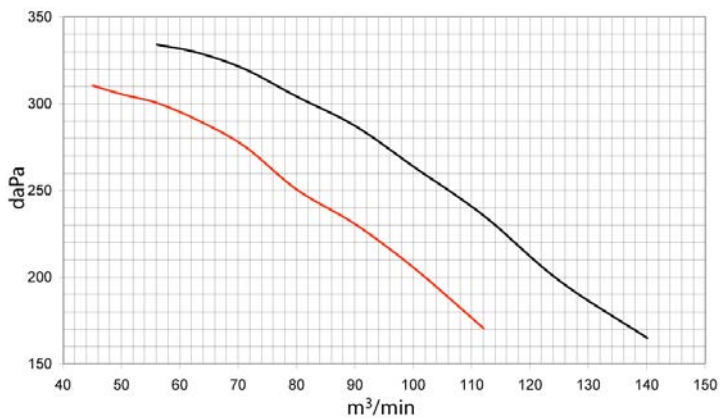
MBS 460 4 kW

MBS 430 3 kW

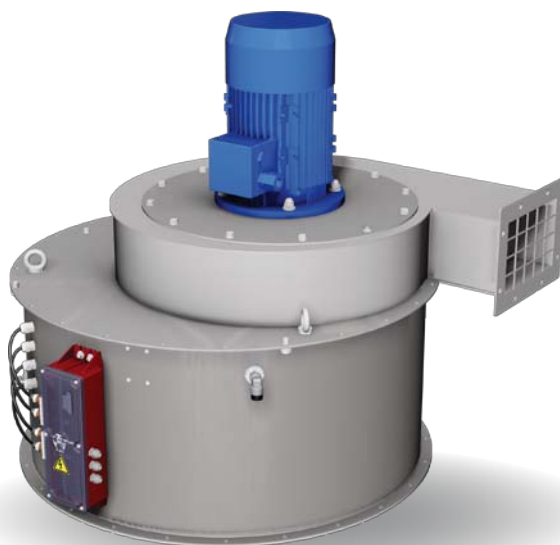
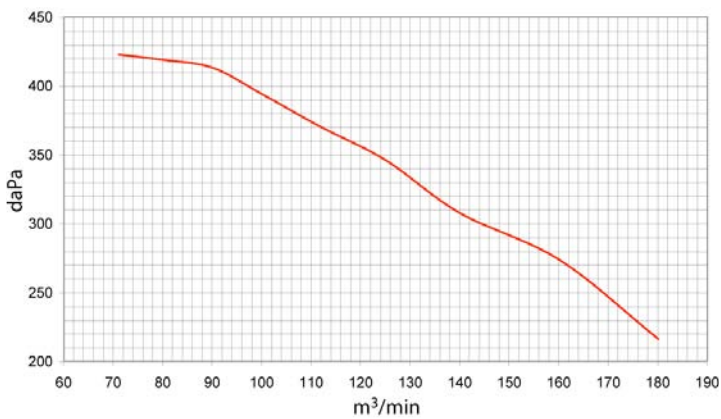


MBV 455 7,5 kW

MBV 420 5,5 kW



MBV 500 11 kW



FLOW CONTROL VALVE

SKB00.F.

DIMENSIONS

DESCRIPTION

The MIX Flow control valve, placed allows the regulation of the air flow.

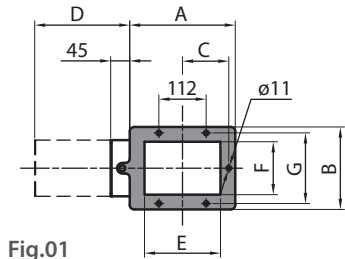


Fig.01

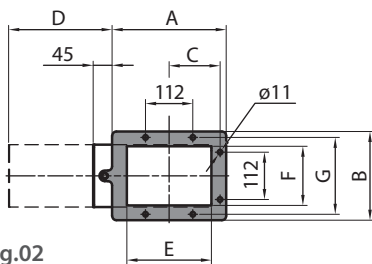
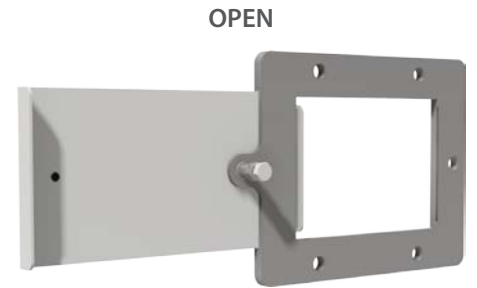


Fig.02

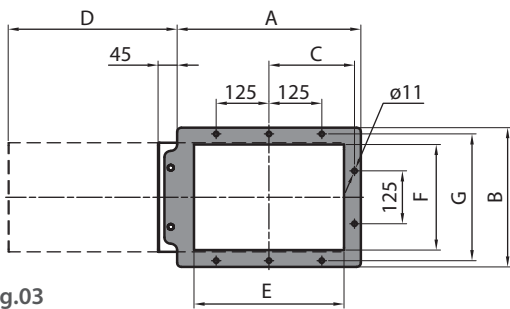


Fig.03

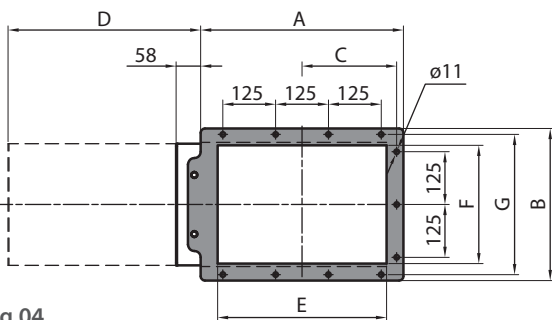
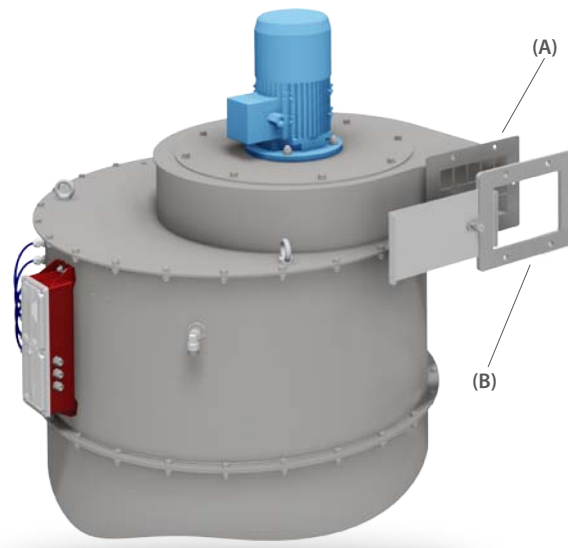


Fig.04



The fixing drilling (B) match the outlet fan flange (A).

CODE	kW	Fig.	A (mm)	B (mm)	C (mm)	D (mm)	E (mm)	F (mm)	G (mm)	kg
SKB001F.	0,75 - 1,1	1	230	182	100	205	160	112	153	2
SKB002F.	1,5 - 2,2	1	250	195	109,5	225	180	125	167	2
SKB003F.	3 - 4	2	270	210	120,5	245	200	140	182	3
SKB004F.	5,5 - 7,5	3	435	330	202,5	400	355	250	300	6
SKB005F.	11	4	480	360	224	456	400	280	332	7

NOTE: All dimensions in mm, unless stated otherwise. The Company MIX reserves the right to alter product specifications without prior notice. All the quoted sizes are approximate. The given figures are mean values with tolerances enabled by the customary production-related variations. In any particular case, and to have the correct values, our written confirmation is necessary.



PRESSURE REDUCER - VISUAL PRESSURE DIFFERENTIAL

N-SKR....

DESCRIPTION

The pressure reducer with manometer and dehumidifier filter comes factory set having the following advantages:

- it regulates the plant pressure to the right working pressure of the filter, saving the air consumption;
- it improves the efficiency and the life of the filtering elements (through the dehumidifier filter);
- it control the actual pressure feeding in the filter tank (through the external manometer).

COMBINATION TABLE

N-SKR 4 A 5 A

Pipe fitting applied

- A: Supply without pipe fitting
- C: Pipe fitting for standard round filters
- E: Pipe fitting/fixing brackets for SFCA..FP
- G: Pipe fitting/fixing brackets for SFCA..GP/HP

Complete equipment:
pressure reducer, manometer,
dehumidifier filter

A: Adjusted to 3 ÷ 4 bar

E: Adjustable from 0,5 ÷ 8,5 bar

4: Sleeve of 1/4"

Pressure reducer



Fixing	Operating temperature	Weight	Working Pressure	Condensate separation	Condensate discharge	Tank capacity	Installation
G1/4"	+ 60°C	0,12 Kg	3,5 bar 0,5 ÷ 8,5 bar	> 90%	Semiautomatic	15 cc	Vertical

SHH....

DESCRIPTION

The gauge is made by "U" bended glass which is connected trough pipe to both the clean side and dirty side of the filter the "U" bended glass is fitted by dyed solution which moves accordingly to the pressure differential between the two sides of the filter. The gauge is equipped with a graduated and graphic scale which makes the cleaning/operating efficiency of the filter elements to be immediately checked.

COMBINATION TABLE

SHH 200 C 2

Visual pressure differential

C: Mounted on the filter

D: Complete with box and fittings

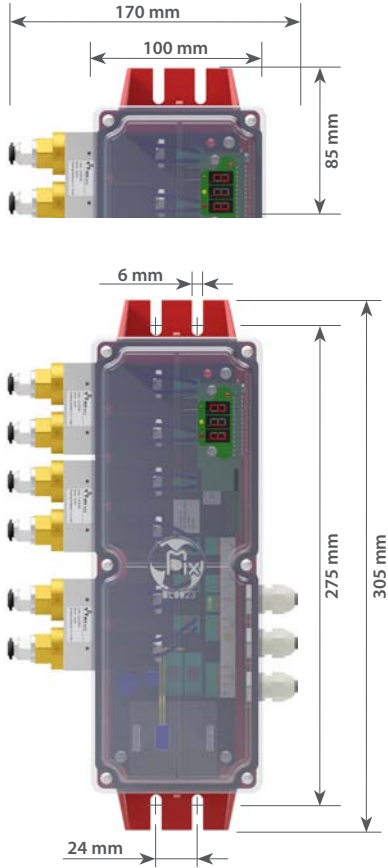


SEQUENTIAL TIMER

N-KQKG

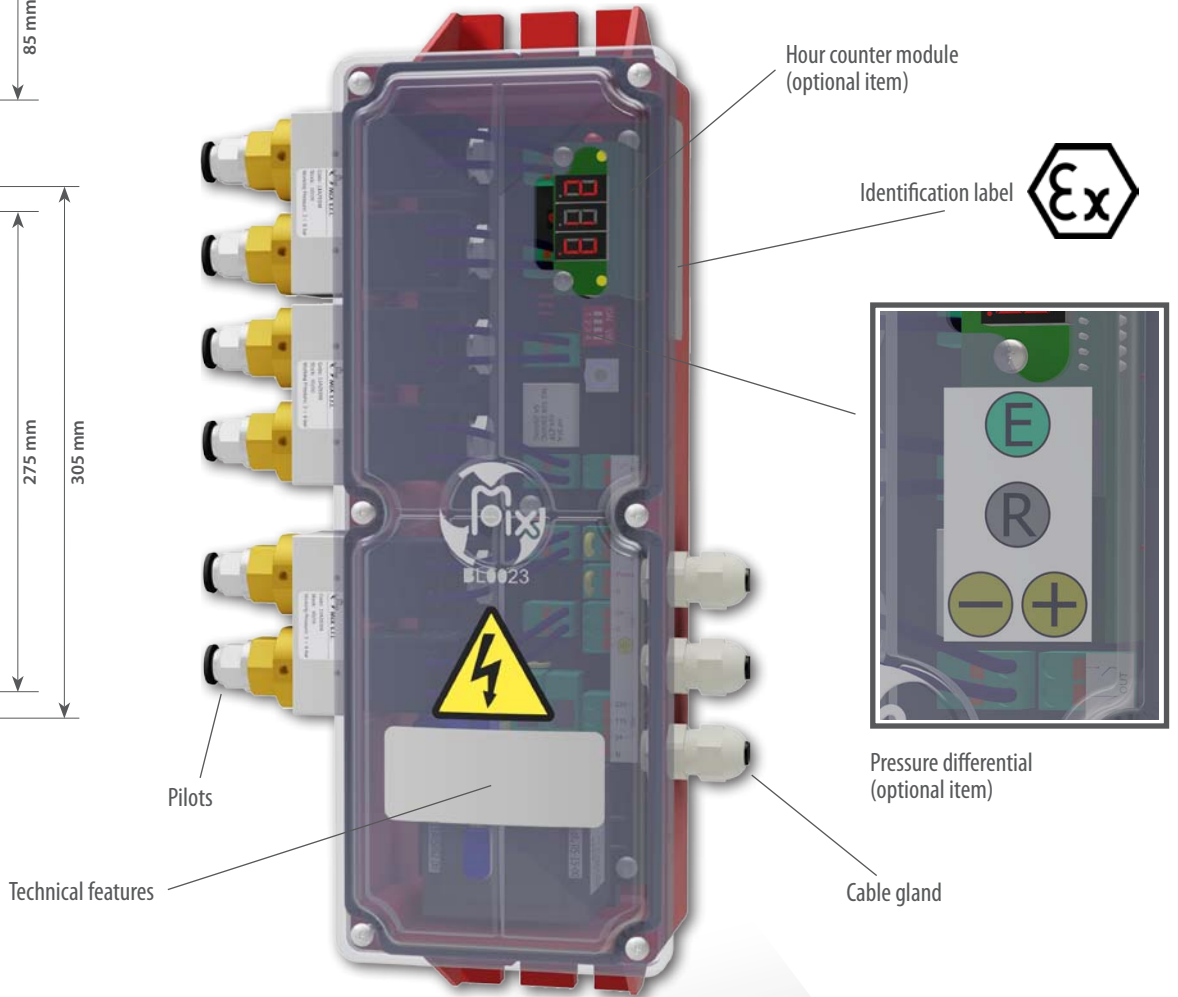
A-KQKG

DIMENSIONS



DESCRIPTION

Electronic control panel with digital technology equipped with pneumatic pilots. It drives pneumatic valves obtaining an important reduction of the electric components and electric connections inside the filter. They are suitable for automatic starting by remote control including post-cleaning function.



COMBINATION TABLE

N-KQKG 2 B 0 R

Electro Pilots

- 2 = 2 Elettropiloti
- 4 = 4 Elettropiloti
- 6 = 6 Elettropiloti

Working Temperature

- 0 = Environment (-20°C +50°C) *
- 2 = Low Temperature (-40°C +50°C) Feeding 115V AC
- 3 = Low Temperature (-40°C +50°C) Feeding 230V AC

Operation

	HOUR COUNTER	PRESSURE DIFFERENTIAL
B	/	/
C	✓	/
D	✓	✓

Use

- M = Electro-pneumatic sequencer
- R = Package including the N-KQKG...M / A-KQKG...M Electro-pneumatic sequencer and the User manual

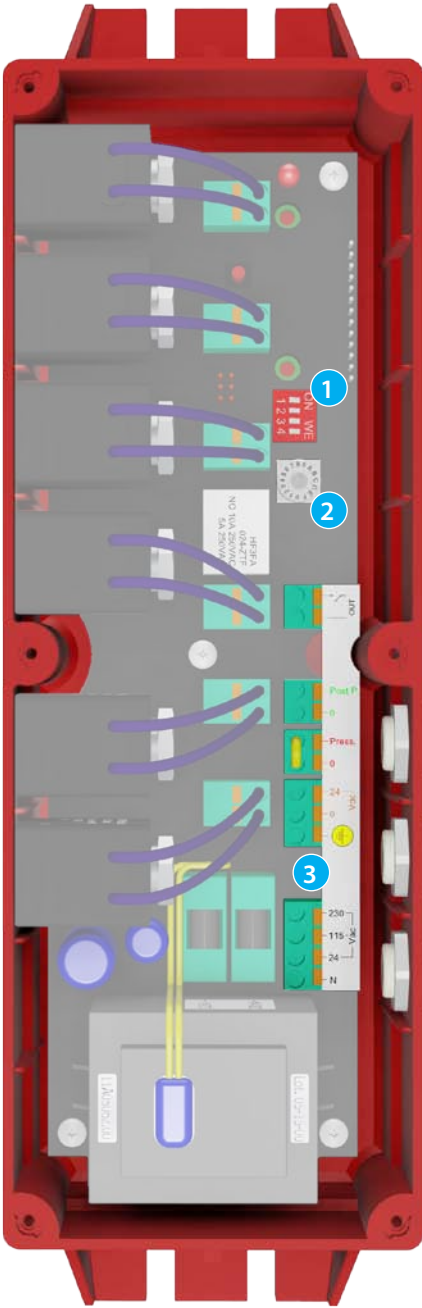
Intended use of the device

- N = Electropneumatic sequential timer
- A = ATEX-marked electropneumatic sequential timer

* (-20°C +40°C) ATEX version



SEQUENTIAL TIMER



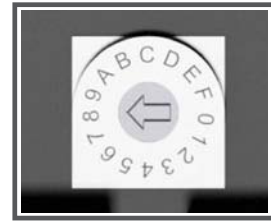
1 - ADJUSTMENTS WITH DIP-SWITCH



Dip-switch for various options:

	← SW_1 = ON	Post-cleaning disabled
	← SW_1 = OFF	Post-cleaning enabled
	← SW_2 = ON ← SW_3 = OFF	2 Pilots active
	← SW_2 = OFF ← SW_3 = ON	4 Pilots active
	← SW_2 = ON ← SW_3 = ON	6 Pilots active
	← SW_4 = ON	standard post-cleaning (pause time given by the rotary switch)
	← SW_4 = OFF	fast post-cleaning

2 - ROTARY SWITCH

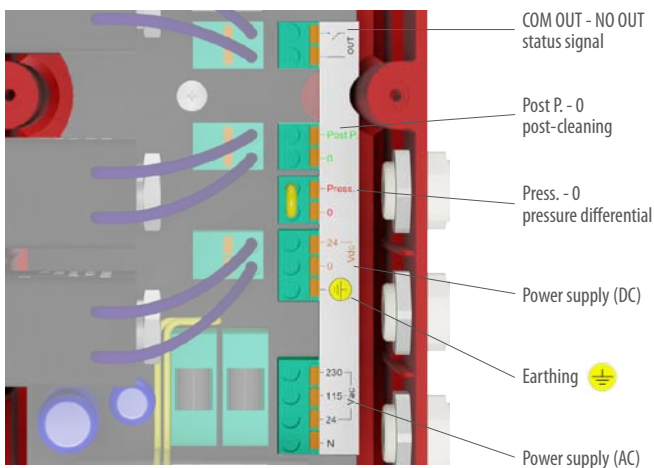


Rotary switch for adjusting the pause time:

Position	Pause (sec)
0	15
1	20
2	25
3	30
4	35
5	44
6	52
7	60
8	75
9	88
A	100
B	118
C	148
D	175
E	210
F*	4

(*) Only with permission from MIX S.r.l.

3 - ELECTRICAL CONNECTION



Connection	Terminals to connect ⁽¹⁾
230 Vac	230 - N -
115 Vac	115 - N -
24 Vac	24 - N -
24 Vdc	24 Vdc - 0 -
Post-cleaning	Post P - 0
Pressure differential	Press. - 0

⁽¹⁾ always use three-wire power supply cables (phase, neutral and earthing), minimum section 0.5 mm², cable outer diameter max. 7 mm with T12 insulation degree

NOTE: All dimensions in mm, unless stated otherwise. The Company MIX reserves the right to alter product specifications without prior notice. All the quoted sizes are approximate. The given figures are mean values with tolerances entailed by the customary production-related variations. In any particular case, and to have the correct values, our written confirmation is necessary.

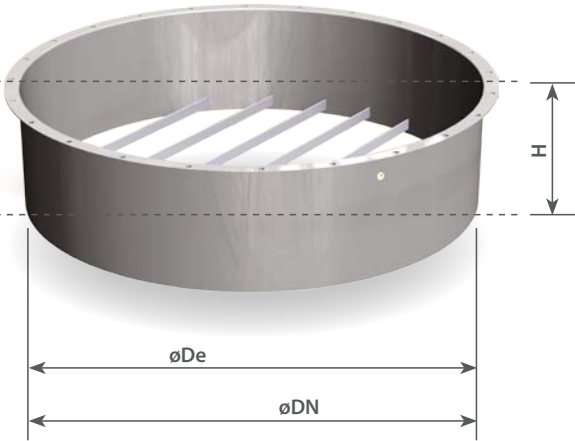


T-SFSE....

DIMENSIONS

DESCRIPTION

MIX base-filter ring is used to fix the filter to the silo, container or machine below.
The wide range of materials of construction allow its use in many sectors and also, for pneumatic conveyors in vacuum (vacuum).
The connection to the filter is made with flange, while the installation to the silo is made by welding.



COMBINATION TABLE

T-SFS **E** **05** **A** **1**

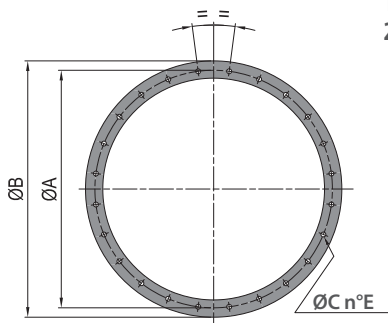
Filter Base

Classification
MSD

Size
05: DN350
10: DN540
20: DN790
22: DN950
24: DN1100
26: DN1300
28: DN1550

Variable
A: With grid
B: Without grid

Material
1: Carbon Steel
2: Stainless
Steel AISI 304



CODE				DN	H	ØDe	ØA	ØB	ØC	n°E	Bolts	Kg
T-SFSE	05	B	2	350	50	353	382	402	9	12	M8	1,4
T-SFSE	10	A	1	540	210	540	570	590	9	16	M8	7,3
T-SFSE	10	A	2	540	210	540	570	590	9	16	M8	7,3
T-SFSE	20	A	1	790	210	792	820	840	9	24	M8	11,5
T-SFSE	20	A	2	790	210	792	820	840	9	24	M8	11,5
T-SFSE	22	A	1	950	230	958	996	1024	11	28	M10	25
T-SFSE	22	A	2	950	230	958	996	1024	11	28	M10	25
T-SFSE	24	A	1	1100	230	1117	1154	1182	11	32	M10	30
T-SFSE	24	A	2	1100	230	1117	1154	1182	11	32	M10	30
T-SFSE	26	A	1	1300	230	1300	1338	1365	11	36	M10	36
T-SFSE	26	A	2	1300	230	1300	1338	1365	11	36	M10	36
T-SFSE	28	A	1	1550	230	1550	1588	1615	11	44	M10	48
T-SFSE	28	A	2	1550	230	1550	1588	1615	11	44	M10	48

NOTE: All dimensions in mm, unless stated otherwise. The Company MIX reserves the right to alter product specifications without prior notice. All the quoted sizes are approximate. The given figures are mean values with tolerances entailed by the customary production-related variations. In any particular case, and to have the correct values, our written confirmation is necessary.





A series of horizontal dotted lines spaced evenly down the page, providing a guide for handwriting or text entry.



FILTERING SYSTEMS AND COMPONENTS FOR PLANTS

QUALITY
SERVICE
TECHNOLOGY
INNOVATION

www.mixitaly.com



MIX S.p.A. - 41032 CAVEZZO (MO) - Via Volturmo, 119/A - ITALY
Tel. +39 0535.46577 - Fax +39 0535.46580 - info@mixitaly.com